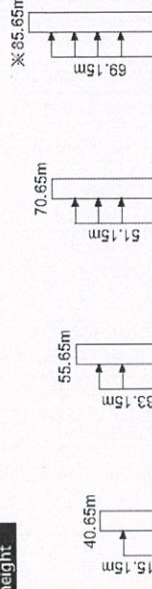


负荷特性 Load diagrams

	45m			40m			35m			30m		
	2falls	3falls	4falls	2falls	3falls	4falls	2falls	3falls	4falls	2falls	3falls	4falls
3.5m-27.3m	4	4	4	4	4	4	4	4	4	4	4	4
3.5m-20.8m	6	5.48	4.52	4.06	3.53	2.91	2.73	2.5	2.37	2.2	2.2	2.2
3.5m-17.5m	6.41	5.48	4.52	4.06	3.53	2.91	2.73	2.5	2.37	2.2	2.2	2.2
3.5m-29.2m	4	4	4	4	4	4	4	4	4	4	4	4
3.5m-21.7m	6	5.86	4.9	4.43	3.87	3.27	3.2	2.99	2.7	2.7	2.7	2.7
3.5m-17.8m	6.76	5.86	4.9	4.43	3.87	3.27	3.2	2.99	2.7	2.7	2.7	2.7
3.5m-31.2m	4	4	4	4	4	4	4	4	4	4	4	4
3.5m-22.8m	6	5.31	4.81	4.2	3.86	3.4	3.4	3.4	3.4	3.4	3.4	3.4
3.5m-18.2m	7.13	6.29	5.31	4.81	4.2	3.86	3.4	3.4	3.4	3.4	3.4	3.4
3.5m-30m	4	4	4	4	4	4	4	4	4	4	4	4
3.5m-23.3m	6	6	5.51	5.04	4.4	4.4	4.4	4.4	4.4	4.4	4.4	4.4
3.5m-18.5m	7.27	6.44	5.51	5.04	4.4	4.4	4.4	4.4	4.4	4.4	4.4	4.4

附着 Anchorages

L46A1 塔身高度 Tower body height



※ 超过此高度请联系我们 Over this height please contact us

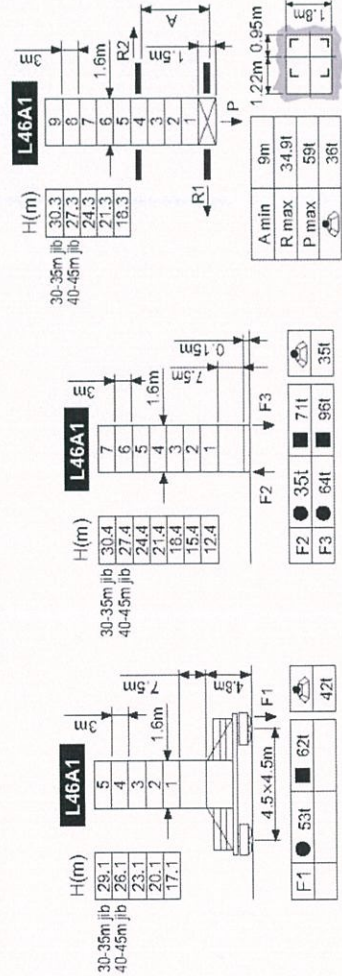
机构 Mechanisms

起升 Hoisting	50LVF20	2 falls		3 falls		4 falls		0 ~ 37		0 ~ 66		37KW	Drum capacity 440m >440m※
		t	l	t	l	t	l	t	l	t	l		
2		2	1	3	1	4	1	0 ~ 37	4	0 ~ 66	2		
3		3	1	4	1	6	1	0 ~ 25	6	0 ~ 44	3		
4		4	1	8	1	8	1	0 ~ 17.5	8	0 ~ 33	4		

变频 Trolleying	40VVF30	2.5min	30KW
回转 Slewing <td>RCV95</td> <td>0 ~ 0.8r/min</td> <td>2x95Nm</td>	RCV95	0 ~ 0.8r/min	2x95Nm
行走 Travelling <td>RT324</td> <td>0 ~ 2.5m/min</td> <td>2x5.2KW</td>	RT324	0 ~ 2.5m/min	2x5.2KW
380V(±5%) 50Hz	93kVA		

※ 请联系我们 Please consult us △ 可选 Option

臂根较点高度 Jib root hinge height



● 工作状态 In service F 反力 Reactions ■ 非工作状态 Out of service 自重 Without load and ballast with longest jib and maximum height

