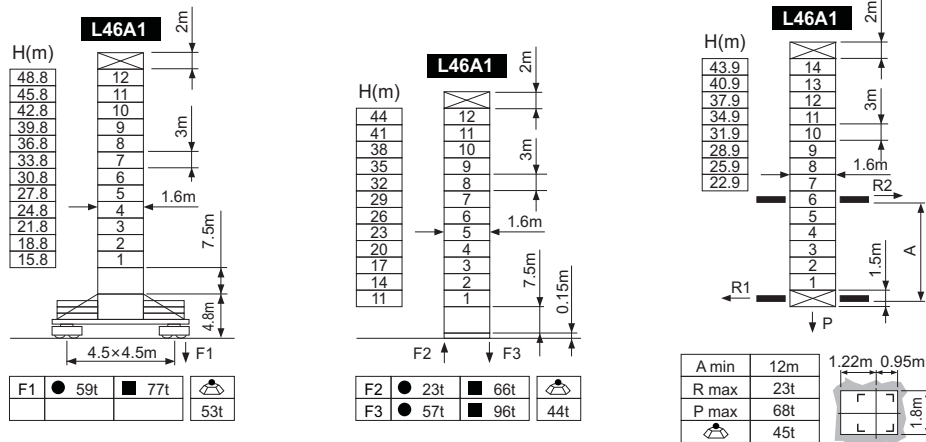


钩底高度 Height under hook



● 工作状态 In service F 反力 Reactions ■ 非工作状态 Out of service 自重 Without load and ballast with longest jib and maximum height

负荷特性 Load diagrams

60m		17m	20m	22m	25m	27m	30m	32m	35m	37m	40m	42m	45m	47m	50m	52m	55m	57m	60m	
2falls	3t	3.1m-33m	3	3	3	3	3	3	2.3	2.1	1.95	1.8	1.65	1.5	1.47	1.39	1.35	1.32	1.3	
4falls	6t	3.1m-17m	6	4.4	3.9	3	3	2.63	2.13	1.93	1.73	1.58	1.43	1.28	1.13	1.08	1.02	0.98	0.95	0.93

55m		17m	20m	22m	25m	27m	30m	32m	35m	37m	40m	42m	45m	47m	50m	52m	55m	
2falls	3t	3.1m-33m	3	3	3	3	3	3	2.79	2.61	2.38	2.24	2.06	1.95	1.8	1.72	1.6	
4falls	6t	3.1m-17m	6	4.97	4.42	3.77	3.41	2.98	2.62	2.41	2.23	2	1.86	1.6	1.57	1.42	1.34	1.22

50m		17m	20m	22m	25m	27m	30m	32m	35m	37m	40m	42m	45m	47m	50m	
2falls	3t	3.1m-38.5m	3	3	3	3	3	3	3	3	2.87	2.71	2.5	2.37	2.2	
4falls	6t	3.1m-19.9m	6	5.98	5.33	4.56	4.15	3.65	3.22	3	2.62	2.49	2.33	2.12	1.99	1.82

45m		17m	20m	22m	25m	27m	30m	32m	35m	37m	40m	42m	45m	
2falls	3t	3.1m-38.5m	3	3	3	3	3	3	3	3	2.87	2.71	2.5	
4falls	6t	3.1m-19.9m	6	5.98	5.33	4.56	4.15	3.65	3.22	3	2.62	2.49	2.33	2.12

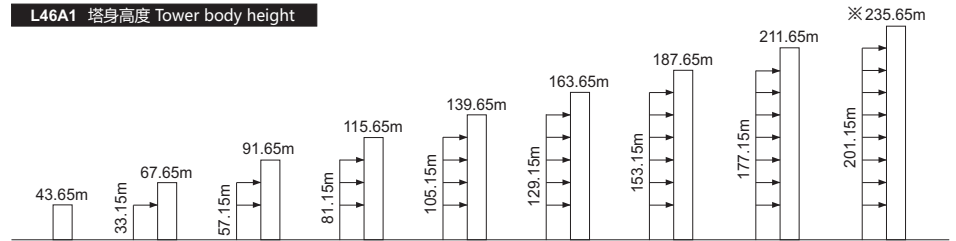
40m		17m	20m	22m	25m	27m	30m	32m	35m	37m	40m	
2falls	3t	3.1m-38.5m	3	3	3	3	3	3	3	3	2.87	
4falls	6t	3.1m-19.9m	6	5.98	5.33	4.56	4.15	3.65	3.22	3	2.62	2.49

35m		17m	20m	22m	25m	27m	30m	32m	35m	
2falls	3t	3.1m-35m	3	3	3	3	3	3	3	
4falls	6t	3.1m-19.9m	6	5.98	5.33	4.56	4.15	3.65	3.22	3

30m		17m	20m	22m	25m	27m	30m	
2falls	3t	3.1m-30m	3	3	3	3	3	
4falls	6t	3.1m-19.9m	6	5.98	5.33	4.56	4.15	3.65

附着 Anchorages

L46A1 塔身高度 Tower body height



※ 超过此高度请联系我们 Over this height please contact us

机构 Mechanisms

起升 Hoisting	33PC15	2 falls	m/min	8	38	76	24/24/4.5kW	绕绳量 Drum capacity
			t	3	3	1.5		
4 falls		m/min	4	19	38		450m	
		t	6	6	3			>450m※

变幅 Trolleying	95JXL	0~60m/min	95Nm
回转 Slewing	RCV95	0~0.8r/min	2×95Nm
行走 Traveling	RT324	0~25m/min	2×5.2kW
380V(±5%) 50Hz	57kVA		

※ 请联系我们 Please consult us △ 可选 Option

