



# CRANE DECK 2800

# CRANE DECKS

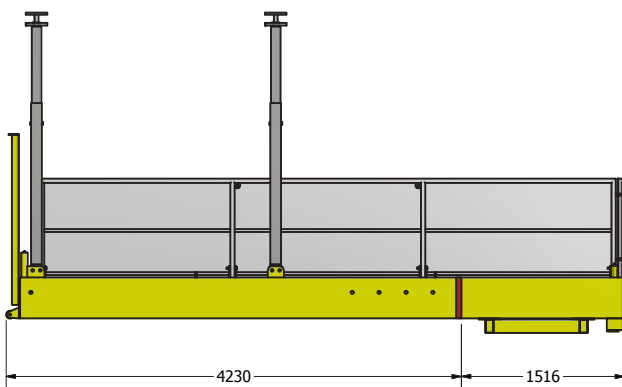
Australian owned and manufactured

	4500mm Outboard	4750mm Outboard	5000mm Outboard	5250mm Outboard
SWL-UDL (kg)	5000	4000	3200	2500
RA (t)	7.6	6.7	6	5.4
RB (t)	3.7	3.3	3	2.7
RC	0.0	0.0	0.0	0.0

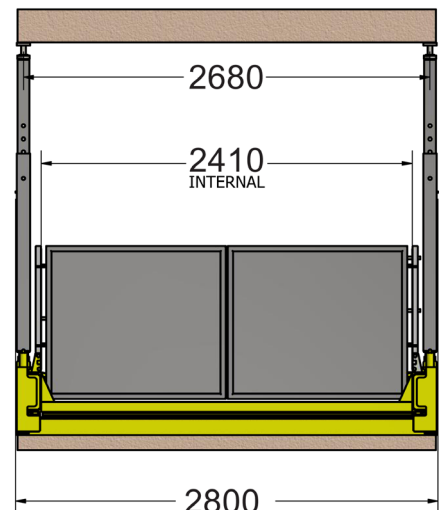
Reaction on each side of the platform. Assumed load always centre both ways on the outboard of the platform. All loads are static loads. No load factors applied

Horizontal force not taken into account.

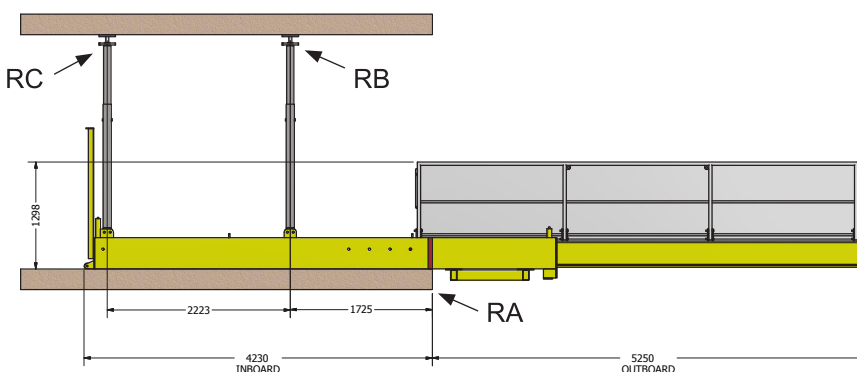
Reactions provided based on rigid supports i.e. effects on deflections of supporting slabs not factored into design.



Side elevation - Retracted



Front Elevation  
2800=2705kg



Side Elevation - Fully Extended